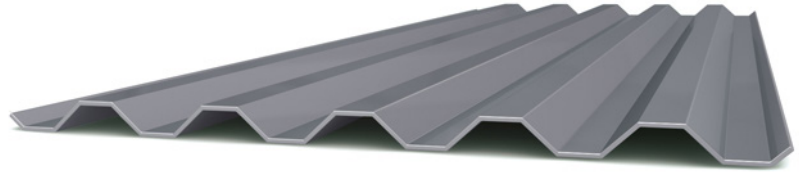
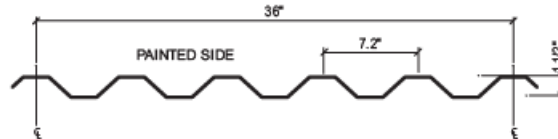


Profiled Aluminum 7.2" Rib Technical Data Sheet



7.2" Rib Panel



Panel Dimensions

Coverage Width	36"
Rib Pitch	7.2"
Profile Depth	1.5"
Thickness	0.040"
Weight	0.62 lb/ft ²

General Information

7.2" Rib is an exposed fastener panel that is useful for projects with high wind load requirements and longer spans. Contact an Arconic Architectural Products Representative for specific load span requirements and for available product finishes.

Material Specifications

3000 Series Alloy in compliance with the Aluminum Association Composition Specifications and conforming to ASTM B209 is standard.

Product Notes

- Remove the protective film quickly after installation.
- Panels should be laid flat in a dry, indoor environment during storage.
- Panels should always be lapped against prevailing winds.
- Typical side lap spacing is 18". Consult a Professional Engineer for specific requirements, as this may not be appropriate for all applications.
- 1/8"x1/2" tape sealant shall be used at all side laps when used as a roof panel.
- Minimum recommended roof slope: 2:12.
- Purlin spacing: Maximum - 5' on-center.
- Panel Length: Maximum - 65' Minimum - 4'.

Testing

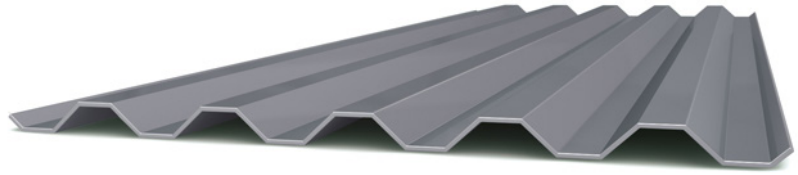
ASTM E283	UL2218
ASTM E331	UL790
UL580	

ARCONIC ARCHITECTURAL PRODUCTS LLC

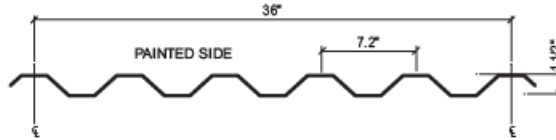
50 Industrial Boulevard
Eastman, GA 31023-4129
Tel. 800 841 7774
www.reynobond.com
EC 99603-012



Profiled Aluminum
7.2" Rib
Technical
Data Sheet



7.2" Rib Panel



Gravity Load Table

Substrate	Span	4'-0"	5'-0"	6'-0"	7'-0"	8'-0"	9'-0"	10'-0"
.040" alum.	3	167	107	74	54	-	-	-

Product Installation

Install panels plumb, level and straight so it is watertight and without waves or other distortions, allowing for thermal movement considerations. Apply sealant tape or caulking as necessary at flashing and panel joints to prevent water penetration.

Product Maintenance and Warranty

7.2" Rib provides a 20 year paint-finish warranty for cracking, chipping, peeling, fading and chalking - providing confidence in a long-lasting application.

To ensure the durability of your panels, use proper care. Remove filings, grease, stains, marks or excess sealants from roof panels system to prevent staining. Store panels and flashing in a safe, dry environment.

Disclaimer:

Laws and building and safety codes governing the design and use of AAP's products, and specifically aluminum composite materials, vary widely. It is the responsibility of the Laws and building and safety codes governing the design and use of AAP's products, and specifically aluminum materials, vary widely. It is the responsibility of the owner, the architect, the general contractor, the installer and the fabricator/transformer, consistent with their roles, to determine the appropriate materials for a project in strict conformity to all applicable national, regional and local building codes and regulations.

ARCONIC ARCHITECTURAL PRODUCTS LLC

50 Industrial Boulevard
Eastman, GA 31023-4129
Tel. 800 841 7774
www.reynobond.com
EC 99603-012

