



# Stocking 2mm .080 Colors

Build Bolder with Reynoclad®

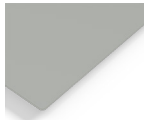
[reynobond.com](http://reynobond.com)

## Colorweld® 500

Series One | 2-Coat Solid Finishes | 30-year warranty | AAMA 2605



**BONE WHITE**



**CADET GRAY**



**CHARCOAL**



**CLASSIC BRONZE**

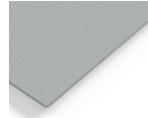


**DEEP BLACK**

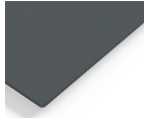


**PURE WHITE**

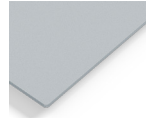
Series Two | 2-Coat Mica Finishes | 30-year warranty | AAMA 2605



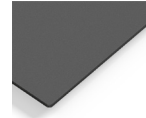
**ANODIC CLEAR**



**PEWTER**

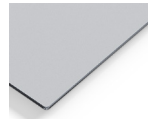


**SILVERSMITH**

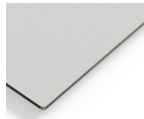


**SUNSHINE GRAY**

Series Three | 3-Coat Metallic Finishes | 30-year warranty | AAMA 2605



**BRIGHT SILVER  
METALLIC**



**CHAMPAGNE  
METALLIC**

## Design Line®

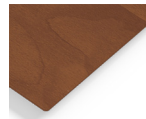
Wood Finishes | 30-year warranty | AAMA 2605



**BLOND  
ECHO**



**FRENCH  
WALNUT**



**ITALIAN  
WALNUT**

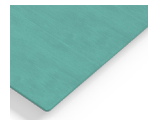


**RUSTIC  
WALNUT**

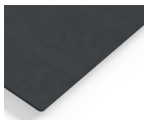


**TENDER  
OAK**

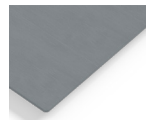
Patina Finishes | 30-year warranty | AAMA 2605



**COPPER  
PATINA**

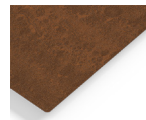


**ZINC  
CHARCOAL**

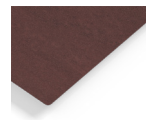


**ZINC  
PATINA**

Stone Finishes | 30-year warranty | AAMA 2605



**ACIERO  
CORTEEN**



**RUSTED  
METAL**

All Reynobond® Colorweld® 500 Series One, Two, Three and Design Line® stocking colors are available upon request as well as Reynoclad® material in thicknesses of .059 and .063. Please consult your Regional Sales Manager for more information.

Due to the printing process, the colors depicted here may deviate from actual colors available. Arconic Architectural Products LLC (AAP) reserves the right to change or withdraw information contained herein without prior notice. Contact AAP for actual color samples.

### Disclaimer:

Laws and building and safety codes governing the design and use of AAP's products, and specifically aluminum composite materials and solid aluminum plate, vary widely. It is the responsibility of the Laws and building and safety codes governing the design and use of AAP's products, and specifically aluminum materials and solid aluminum plate, vary widely. It is the responsibility of the owner, the architect, the general contractor, the installer and the fabricator/transformer, consistent with their roles, to determine the appropriate materials for a project in strict conformity to all applicable national, regional and local building codes and regulations.